

**COACHES' AND STAFF  
MONTHLY EDUCATION**

**ASU** Arizona State University      OCTOBER 15, 2024

1

---

---

---


---

---

---

---

---



- Official Visit Reminders
- Admissions Updates
- Remove From Roster Workflow
- ASU Academic Calendar Reminders
- Legislative Updates
- Athletics Scholarships Signing Period
- Compliance Metrics

Integral to ASU's focus on integrity is athletics compliance—following the rules of the NCAA and Big 12 Conference.

SUN DEVIL COMPLIANCE | COACHES' RULES EDUCATION - OCTOBER 2024

2

---

---

---

---

---

---

---

---

**Official Visit Reminders**

**ASU**

3

---

---

---

---

---

---

---

---

**Too Late to Start the Visit**

- Please work with the Compliance Office before purchasing these flights.
- May provide transportation to the prospect (and up to four family members) from the airport to the hotel without starting the visit.
- May provide a meal to a prospect (and up to four family members) on the way to the hotel (e.g., going to a drive-thru) or at the hotel (e.g., room service) without starting the visit.
- May provide lodging to up to four family members, but the lodging may not:
  - Have additional costs, or
  - Be provided for a recruited sibling/friend (unless sibling is one of 4 family members).

4

---

---

---

---

---

---

---

---

**Too Late to Start the Visit – Example**

- Thursday – Prospect arrives at PHX airport with family members at 6:45 pm.
  - Coaches/staff may provide a meal to a prospect (and up to four family members) on the way to the hotel (e.g., going to a drive-thru) or at the hotel (e.g., room service) without starting the visit.
  - Coaches/staff (and any student-athletes who may be present) must leave hotel right after dropping them off and helping them get checked in.
- Friday morning – Pick the prospect up at any time to start the visit.
- Sunday – Prospect can fly out at any time.

5

---

---

---

---

---

---

---

---

**Siblings – Too Young to Visit**

Younger siblings (those not yet juniors) may accompany an older sibling on an official or unofficial visit so long as no recruiting conversations occur.

6

---

---

---

---

---

---

---

---

**Siblings – Meals/Entertainment**

- Meals – Siblings may receive meals if they are included in the four-family member count.
- Entertainment – Siblings may receive entertainment if they are included in the entertainment money allotment (\$60 per family member).

---

---

---

---

---

---

---

7

**Siblings – Lodging/Recruiting**

- Lodging – Siblings may receive lodging if they are included in the four-family member count.
- Recruiting – Siblings may not be recruited during the visit (e.g., may not have any recruiting conversations with coaches and staff).

---

---

---

---

---

---

---

8

**Other Reminders**

- May provide transportation costs to campus for up to two family members.
- May provide up to four family members with meals, lodging, and entertainment.
- May provide up to 5 complimentary admissions.
- May provide enhanced seating (e.g., exit row seating, additional leg room) in connection with air transportation as long as the ticket is considered coach class.
- May provide a visit without a test score.

---

---

---

---

---

---

---

9

**Gear – Big 12 Stance**

- Institutions may not provide gear to prospects or their guests unless it is for the health and safety of the prospects (and guests).
- Specifically, gear/equipment can be provided through a checkout/retrieval process when there is inclement weather (e.g., rain, cold temperatures) and the prospect is not adequately prepared for said weather.

---

---

---

---

---

---

---

---

10

**No Gameday Simulations**

Gameday simulations may not occur, and here are examples of impermissible simulations (not an exhaustive list):

- Staged press conference;
- Simulated media interview or appearance;
- Running out of the tunnel;
- Using a smoke machine (or equivalent) in a way that any institution may use it on game days.
- Arranging for appearance of mascot, cheerleaders, dance team, or band.

---

---

---

---

---

---

---

---

11

**Photoshoots**

- NCAA educational column – July 8, 2019
- In addition, a photoshoot becomes an impermissible gameday simulation if:
  - It occurs on the game or practice field;
  - The prospect is in uniform and/or with equipment related to the sport; **AND**
  - The prospect demonstrates or displays athletics ability or technique associated with the sport (e.g., athletic stance, pose, motion associated with the sport).

Note, tryout implications.

---

---

---

---

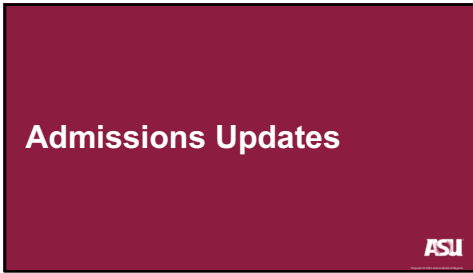
---

---

---

---

12



13

---

---

---

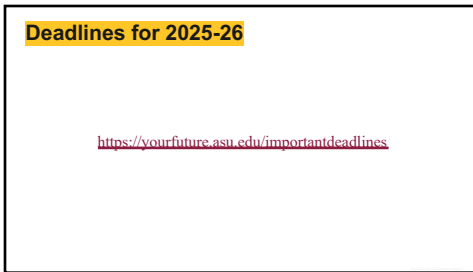
---

---

---

---

---



14

---

---

---

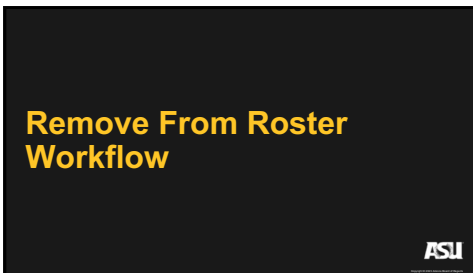
---

---

---

---

---



15

---

---

---

---

---

---

---

---



16

---

---

---

---

---

---

---

**Veterans Day**

- ASU is closed for Veterans Day on November 11.
- So this must be an off day from all CARAs and RARAs for out-of-season sports.

17

---

---

---

---

---

---

---

**Upcoming Dates**

Civic Engagement Day – November 5

- All CARAs shall be prohibited on . . . November 5.
- An institution shall develop civic engagement policies, which must address opportunities available to student-athletes for civic engagement, through a collaborative process involving student-athletes, coaches and senior athletics department staff members to ensure student-athletes are provided adequate opportunities, resources and programming to participate in civic engagement activities.

18

---

---

---

---

---

---

---

**Civic Engagement Exception**

17.1.7.6.1 Exception – **Championship Segment.** A team that is participating in the segment of the playing season that concludes with the NCAA championship may engage in countable athletically related activities on . . . November 5, provided student-athletes are given a day off from CARAs to participate in civic engagement activities and programming within 15 days before or after . . . November 5.

---

---

---

---

---

---

---

---

19

**Last Day for CARAs**

December 1 is the last day for CARAs for out-of-season sports for the fall semester (one week before finals).

---

---

---

---

---

---

---

---

20

**LEGISLATIVE UPDATES**




---

---

---

---

---

---

---

---

21

**Rules Changes**

- Complimentary Admissions at Conference Tournaments (Proposal 2024-45):
  - Effective Date: Immediate
  - The proposal was amended to include men's basketball and to allow the provision of reasonable local transportation and nominal food and drink at the competition.
  - The amended proposal was adopted by Council.
  - Institutions cannot have any say in the provision of these complimentary admissions, and it cannot be done for recruiting purposes.
- Preseason Practice – Women's Lacrosse (Proposal 2024-48):
  - Effective Date: August 1, 2025
  - Changes the start date for preseason practice to one week earlier.
  - The playing season will continue to be 132 days.

---

---

---

---

---

---

---

---

22

**January 2025 Legislative Cycle**

- Pre-enrollment activities for men's ice hockey and skiing
  - o Would allow prospects to participate on a professional team without losing their eligibility.
  - o The prospects still cannot be paid more than actual and necessary expenses.
- Baseball Playing and Practice Seasons
  - o Would create a 45-day nonchampionship segment with 35 practices and allow four contests instead of two.
  - o Would create a specific preseason in January with a 14-week playing season beginning in February.
- Women's Soccer Playing and Practice Seasons
  - o Creates a "transition period" that would allow teams to come in two weeks earlier.
  - o Moves the first contest date and reduces the scrimmage/exhibition contests from three to two exhibitions contests.

---

---

---

---

---

---

---

---

23

**Athletics Scholarships Signing Period**




---

---

---

---

---

---

---

---

24



**NLIs – No Longer A Thing**

The membership has voted to remove the National Letter of Intent program and transition the applicable information into NCAA rules.

---

---

---

---

---

---

---

25

**Signing Period Reminders**

- The signing period runs from November 13, 2024, through August 1, 2025 (and in basketball only through November 20).
- The prospect must be registered with the NCAA Eligibility Center.
- An academic evaluation should be completed before sending the athletics scholarship agreement.
- The Athletics Scholarship Request form is in TCR.

---

---

---

---

---

---

---

26

**Length of Agreements**

The Compliance Office recommends that all scholarships issued to high school prospects:

- Are five years in length, and
- Include 0% in the final year for maximum flexibility.

---

---

---

---

---

---

---

27

**Sending the Athletics Scholarships**

- Please submit requests ASAP and no later than November 6.
- Leo Gannon will send via AdobeSign on November 11 or 12.
- Leo is the contact for sending the athletics scholarships and for specific questions relating to individual and team equivalencies.

---

---

---

---

---

---

---

---

28

**Impermissible Activities**

- Speaking about a prospect before the signing
- Attending an off-campus signing
- Personally delivering the NLI off campus

---

---

---

---

---

---

---

---

29

**Permissible Activities**

- Athletics scholarship signees may:
  - Have contact with a booster (in-person, telephone)
  - Take a visit during a dead period
- SDA may publicly comment on athletics scholarship signees' after the Compliance Office verifies the documentation has been returned and has been filled out correctly.

---

---

---

---

---

---

---

---

30

**Recruiting Materials**

Coaches and staff may provide athletics scholarship signees with pre-enrollment information such as:

- Orientation information
- Strength and conditioning programs
- Practice activities in regular and video format, for example:
  - Playbook
  - Game clips

---

---

---

---

---

---

---

---

31

**Recruiting Bans**

- Once a prospect signs an athletics scholarship with an institution, a recruiting ban goes into effect.
- Athletics scholarship recruiting ban removal: Once a prospect asks for an athletics scholarship release, the recruiting ban is lifted.

---

---

---

---

---

---

---

---

32

**Dead Periods**

November 11-14

- All sports except football
- Track/Cross country – Nov. 11-14 and Nov. 23 (BYU football game)

#MythBuster: Dead period rules do not apply to phone calls and electronic correspondence

---

---

---

---

---

---

---

---

33

**Alston Update**

The Academic Enhancement funds have been awarded to student-athlete accounts.

34

---

---

---

---

---

---

---

---

**Metrics Discussion**



35

---

---

---

---

---

---

---

---

**Top 3**

Coach Metrics 2024-25											
Sport Metrics	CSMA On-Time %	Attendance %	Compliance %	Residency %	Retention %	CSMA %	CSMA %	CSMA %	CSMA %	Coach Metrics	Education %
Baseball	100%	100%	100%	100%	100%	100%	100%	100%	100%	100%	100%
Baseball	100%	100%	100%	100%	100%	100%	100%	100%	100%	100%	100%
Baseball	100%	100%	100%	100%	100%	100%	100%	100%	100%	100%	100%

Coach Metrics 2024-25											
Sport Metrics	CSMA On-Time %	Attendance %	Compliance %	Residency %	Retention %	CSMA %	CSMA %	CSMA %	CSMA %	Coach Metrics	Education %
Baseball	100%	100%	100%	100%	100%	100%	100%	100%	100%	100%	100%
Baseball	100%	100%	100%	100%	100%	100%	100%	100%	100%	100%	100%
Baseball	100%	100%	100%	100%	100%	100%	100%	100%	100%	100%	100%

Coach Metrics 2024-25											
Sport Metrics	CSMA On-Time %	Attendance %	Compliance %	Residency %	Retention %	CSMA %	CSMA %	CSMA %	CSMA %	Coach Metrics	Education %
Baseball	100%	100%	100%	100%	100%	100%	100%	100%	100%	100%	100%
Baseball	100%	100%	100%	100%	100%	100%	100%	100%	100%	100%	100%
Baseball	100%	100%	100%	100%	100%	100%	100%	100%	100%	100%	100%

36

---

---

---

---

---

---

---

---

**Bottom 3**

Coach Metrics 2024-25

Coach Metrics	Education %	Student Success %	Retention %	Graduation %	Transfer %	Coach Metrics	Education %	Student Success %	Retention %	Graduation %	Transfer %
Coach Metrics	100%	100%	100%	100%	100%	Coach Metrics	100%	100%	100%	100%	100%

Coach Metrics 2024-25

Coach Metrics	Education %	Student Success %	Retention %	Graduation %	Transfer %	Coach Metrics	Education %	Student Success %	Retention %	Graduation %	Transfer %
Coach Metrics	100%	100%	100%	100%	100%	Coach Metrics	100%	100%	100%	100%	100%

Coach Metrics 2024-25

Coach Metrics	Education %	Student Success %	Retention %	Graduation %	Transfer %	Coach Metrics	Education %	Student Success %	Retention %	Graduation %	Transfer %
Coach Metrics	100%	100%	100%	100%	100%	Coach Metrics	100%	100%	100%	100%	100%

37

---

---

---

---

---

---

---

---



38

---

---

---

---

---

---

---

---