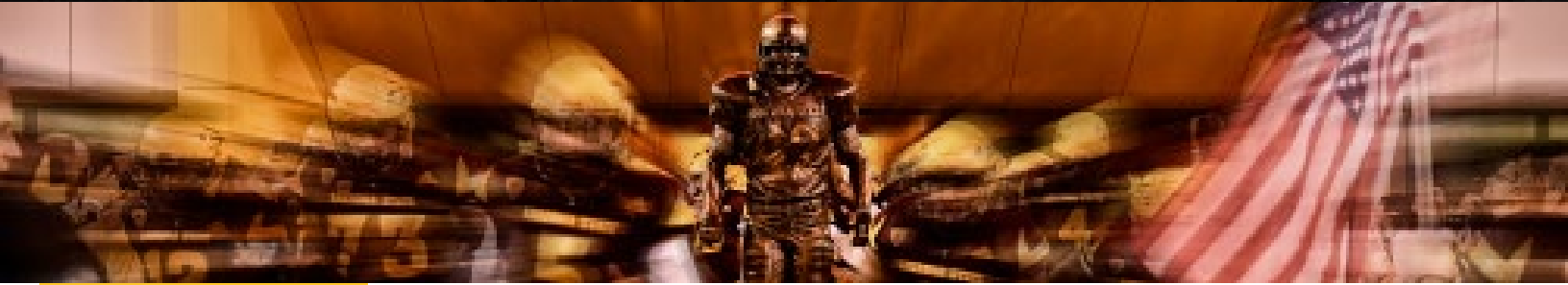




SUN DEVIL COMPLIANCE

VOLUME 12 - ISSUE 6 - FEBRUARY 2023



Inside This Issue

Camps and Clinics	2
Gear and Prospects	2
Outside Competition	3
Recruiting Calendars	4

NCAA LEGISLATIVE UPDATES

DI Council Proposals

The NCAA Division I Council voted on and approved the following legislative proposals on January 11, 2023. These new rules go into effect July 1, 2023.

Proposal 2022-28 - Removes the “volunteer coach” designation. This means coaches who were previously volunteers may now (1) recruit off-campus, and (2) if they have been issued an SDA phone, may communicate with prospects under the same recruiting rules as coaches, but only if they have an ARMS profile. Additionally, this proposal modifies the rules relating to football graduate assistant coaches.

Proposal 2022-30 - Adds two countable coaches in both men’s and women’s basketball. These two additional coaches cannot engage in off-campus recruiting.

Proposal 2022-34 - Removes the standardized test score requirement from NCAA initial eligibility requirements. Incoming student-athletes may still use these test scores for academic aid purposes but are not required to.

Proposal 2022-35 - Adds midyear transfer restrictions in softball.

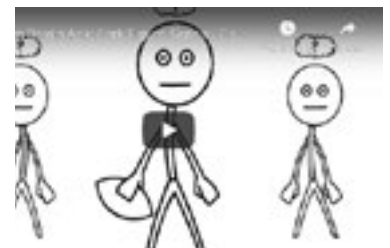
Finally, the NCAA DI Council paused voting on official and unofficial visit proposals. More information regarding the time-frame for those proposals will likely come in March or April 2023.



SUPER BOWL: DON'T BET ON IT!

SDA staff members and student-athletes are prohibited from betting money on any sporting event (college, professional, or otherwise), in which the NCAA conducts collegiate championships and Emerging Sports. This includes Super Bowl prop bets and point squares that require you to pay an entry fee.

For more information, click on the Compliance Office's sports wagering video to the right.



2022 - 23

COMPLIANCE STAFF

Steve Webb
CACO
(480) 965-5138

Justin Pollnow
Senior Director
(480) 965-5755

Caroline Jeffers
Director
(480) 965-5943

Kayla Branderhorst
Director
(480) 965-0116

Susanna Tamol
Asst. Director
(480) 965-5722

Leo Gannon
Asst. Director
(480) 727-8533

Mel Aptaker
Coordinator
(480) 727-3442

Matt Epstein
Coordinator
(480) 965-9748



Follow us [@SunDevilsAsk](https://www.instagram.com/SunDevilsAsk)



CAMPS AND CLINICS

Any camp or clinic owned by an SDA employee is an institutional camp under NCAA legislation. Noninstitutional Camps are those owned or operated by other coaches or groups outside of SDA. The following details some of the main NCAA rules and regulations relating to camps.

Attendance Requirements

- Must be open to any and all entrants (limited only by number, age, grade, and/or gender).
- No free or reduced admission for prospects.
- May invite specific prospects who are eligible to receive recruiting materials (juniors and seniors in high school) provided the camp is legitimately advertised.

Advertisements, Apparel, and Awards

- All camps must be advertised as open to any all for at least 14 days before the start of the camp.
- Camps may provide apparel and awards to campers, but only if the costs are included in the camp admission or registration fees.

Noninstitutional (Outside) Camps

- Coaches and staff must obtain approval from the Compliance Office before committing to work at noninstitutional camps.
- Noninstitutional camps must meet all institutional camp legislative requirements (e.g., open to any and all, advertised for at least 14 days, include instruction, etc.).

Student-Athlete Employment

- May work at institutional and noninstitutional camps. NOTE: International student-athletes may NOT work camps because ASU camps are not considered on-campus employment.
- May be featured in camp advertisements (e.g., name, image, likeness) only in the Staff section.
- Must be paid going rate.

GEAR AND PROSPECTS



Institutions may not provide gear to prospects or their guests. If there is a health and safety concern (e.g. extreme rain, torrential downpour), SDA may loan gear on an issue and retrieval basis. Requesting coach or director of ops must fill out checkout and retrieval form.

Coaches must check with Compliance Office before loans are made.

SPOT THE VIOLATION

Quincy Quarterback and his friends, Randy Runningback and Sammy Safety have been invited to a family Super Bowl party at Quincy's uncle's house. Quincy's uncle has a Super Bowl point square board available with a \$5 per square buy-in. Quincy, Randy, and Sammy each buy two squares to help make the game more enjoyable.

OUTSIDE INDIVIDUAL COMPETITION

Subject to the conditions below, a student-athlete may participate in outside competition as an individual at any time in his or her sport as either a member of an SDA team or as an unattached individual.

Because mistakes related to individual competition carry serious consequences (e.g., use of seasons of competition, amateurism violations), student-athletes must fill out the Outside Competition Approval form in ARMS before participating in outside competition so the event can be reviewed before competition occurs.

COMPETING IN UNATTACHED INDIVIDUAL COMPETITION

General Rules

A student-athlete competing unattached from SDA may avoid using dates or seasons of competition if the student-athlete:

- Represents only him- or herself and not a club, team, or other organization;
- Pays his or her own expenses, including all travel and competition expenses (i.e., they only receive expenses from parents, legal guardians, or event sponsors);
- Does not receive any coaching or instruction from SDA staff members; and
- Does not use SDA-issued uniforms or apparel still used by SDA in competition (note that a student-athlete may use SDA equipment (e.g., golf bag, bicycle)).

Prizes and Awards

Student-athletes may accept prize money if it does not exceed their “actual and necessary expenses” and is provided by the event sponsor. The term “actual and necessary expenses” is limited in scope and defined in the NCAA manual—contact the Compliance Office with questions.

COMPETING FOR SDA IN OUTSIDE INDIVIDUAL COMPETITION

General Rules

If a student-athlete participates in outside individual competition representing SDA, this participation must be counted toward individual NCAA competition limits. SDA may provide travel expenses, student-athletes may use current SDA-issued uniforms, and SDA coaches may coach or provide instruction during these competitions.

Prizes and Awards

Student-athletes may not receive any prizes or awards for their place or finish when competing for SDA in an outside individual competition. So student-athletes may not accept any prize money, even if it does not exceed actual and necessary expenses. In addition, the Pac-12 has confirmed that neither SDA nor the SDA sport program may receive the prize money on the student-athlete's behalf.

AND THE ANSWER IS . . .

Because there is an entry fee to participate, the Super Bowl point square is impermissible. SDA staff members and student-athletes are prohibited from betting money on any sporting event—college, professional, or otherwise—in which the NCAA conducts championships. This includes Super Bowl prop bets and point squares that require you to pay an entry fee.

RECRUITING CALENDARS

For information about permissible dates for various recruiting activities, check out our Recruiting 101 tip sheet, available [here](#). And please see sport recruiting calendars listed below.

FEBRUARY 2023

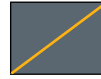
CALENDAR KEY



EVALUATION PERIOD



CONTACT PERIOD
(Recruiting Period in MBB)



QUIET PERIOD



DEAD PERIOD

FOOTBALL

			1	2	3	4
5	6	7	8	9	10	11
12	13	14	15	16	17	18
19	20	21	22	23	24	25
26	27	28				

BASEBALL

			1	2	3	4
5	6	7	8	9	10	11
12	13	14	15	16	17	18
19	20	21	22	23	24	25
26	27	28				

WOMEN'S BASKETBALL

			1	2	3	4
5	6	7	8	9	10	11
12	13	14	15	16	17	18
19	20	21	22	23	24	25
26	27	28				

VOLLEYBALL

			1	2	3	4
5	6	7	8	9	10	11
12	13	14	15	16	17	18
19	20	21	22	23	24	25
26	27	28				

SOFTBALL

			1	2	3	4
5	6	7	8	9	10	11
12	13	14	15	16	17	18
19	20	21	22	23	24	25
26	27	28				

ALL OTHER SPORTS

			1	2	3	4
5	6	7	8	9	10	11
12	13	14	15	16	17	18
19	20	21	22	23	24	25
26	27	28				

Softball evaluations only at scholastic practices and competitions.

Please note this table has dates that run until February 28. Many of the periods run past February 28.

Visit the [NCAA Recruiting Calendars website](#) for full recruiting calendars and NCAA sport-specific recruiting guides.

ASK FIRST!